

www.

**cargraphic**<sup>®</sup>  
.com

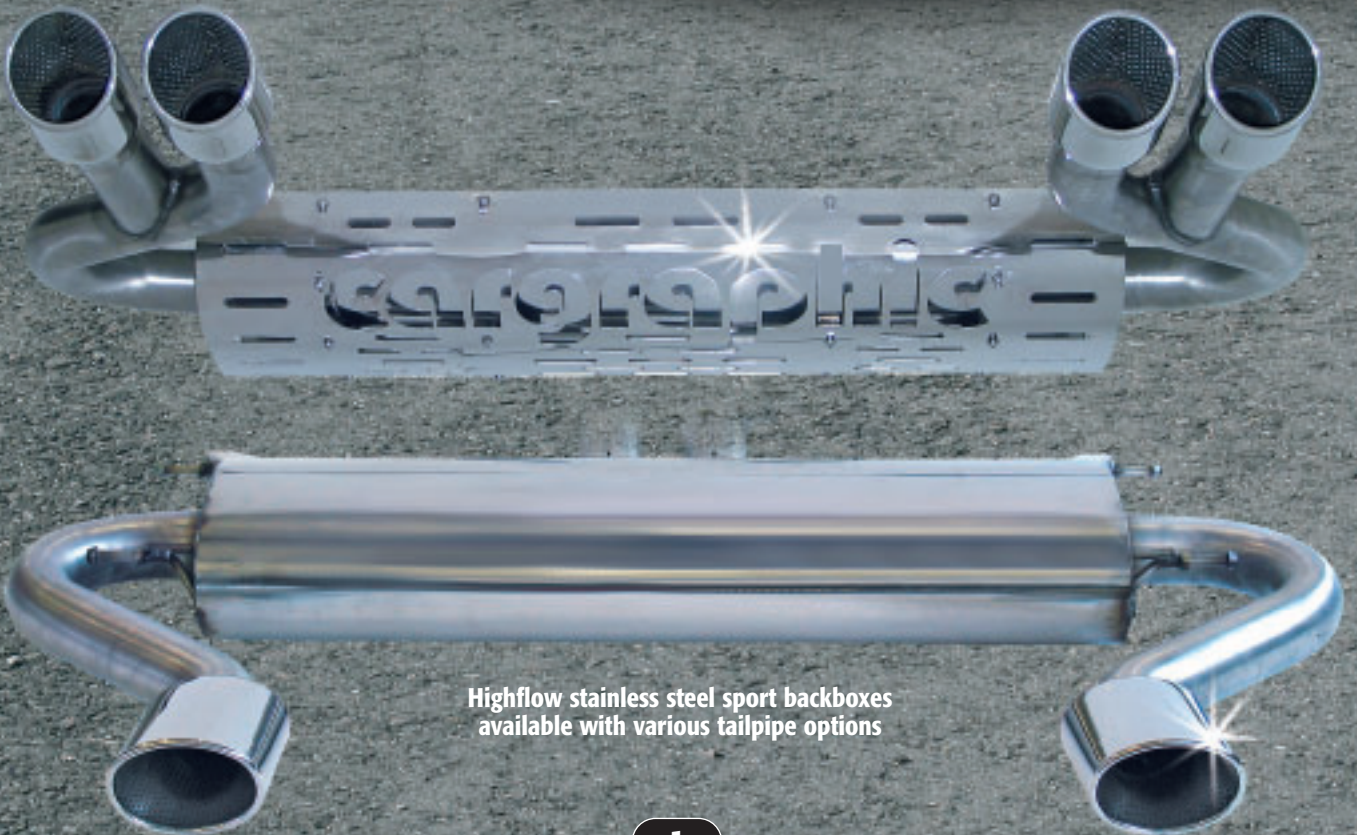
## Tuning-Program for Range Rover LM

**„SPORT wheels“  
22“**



**cargraphic SPORT 22“ wheel and tire set**

FA.: 10,0x22 with 305/35R22  
RA.: 10,0x22 with 305/35R22  
Part.-No.: RRLM2210461046R



Highflow stainless steel sport backboxes  
available with various tailpipe options

www.

co

ohic®



**„SPORT wheels“  
22“**



Surcharge paint center seal grey  
Part.-No.: CAR5130SEALGREY

**cargraphic SPORT 22“ wheel and tire set**

FA.: 10,0x22 with 305/35R22  
RA.: 10,0x22 with 305/35R22  
Part.-No.: RRLM2210461046R



www.

cargraphic

„SPORT wheels“

22”  
®



**cargraphic SPORT 22” wheel and tire set  
for SUPERCHARGED model only**

FA.: 10,0x22 with 305/35R22

RA.: 10,0x22 with 305/35R22

Part.-No.: RRLMSC2210531046R



**„SPORT wheels“  
21“**



**cargraphic SPORT 21“ wheel and tire set**

FA.: 9,5x21 with 275/40R21  
RA.: 10,5x21 with 315/35R21  
Part.-No.: RRLM2195391539R



**cargraphic SPORT 21“ wheel and tire set  
for SUPERCHARGED model only**

FA.: 9,5x21 with 275/40R21  
RA.: 10,5x21 with 315/35R21  
Part.-No.: RRLMSC2195351539R



www.

cargraphic



**„RACING wheels“  
20“**

**cargraphic RACING 20“ wheel and tire set**

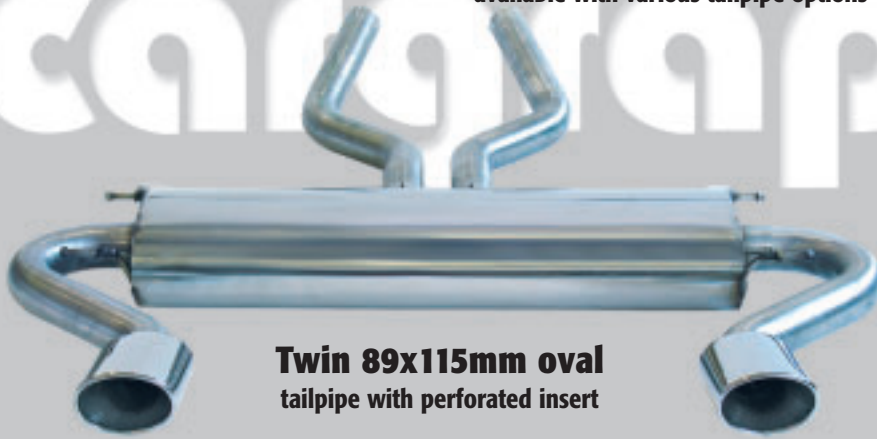
FA.: 10,0x20 with 295/45R20  
RA.: 10,0x20 with 295/45R20  
Part.-No.: RRLM2010461046R



**cargraphic RACING 20“ wheel and tire set  
for SUPERCHARGED model only**

FA.: 10,0x20 with 295/45R20  
RA.: 10,0x20 with 295/45R20  
Part.-No.: RRLMSC2010411046R





**Twin 89x115mm oval**  
 tailpipe with perforated insert

4.4L V8 BMW Engine  
 3.0L TD6 BMW Engine

Part.-No.: PXRR44100  
 Part.-No.: PXRR44102



**Quad 89mm round**  
 slash cut  
 internal roll tailpipe  
 with perforated insert

4.4L V8 BMW Engine  
 3.0L TD6 BMW Engine

Part.-No.: PXRR44108W  
 Part.-No.: PXRR44103W



**Twin 89x115mm oval**  
 tailpipe with perforated insert

4.4L V8 JAGUAR Engine  
 4.2L V8 Supercharged JAGUAR Engine

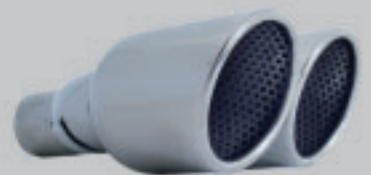
Part.-No.: PXRR44150  
 Part.-No.: PXRR44200

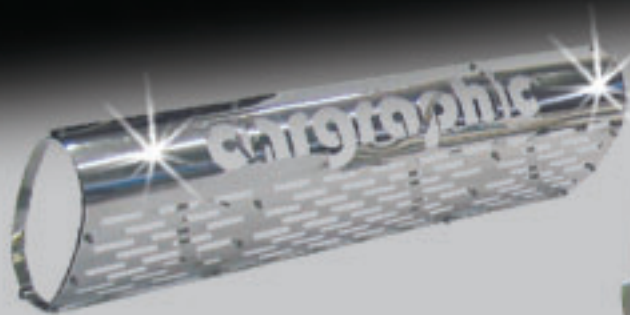


**Quad 89mm round**  
 slash cut  
 internal roll tailpipe  
 with perforated insert

4.4L V8 JAGUAR Engine  
 4.2L V8 Supercharged JAGUAR Engine

Part.-No.: PXRR44158W  
 Part.-No.: PXRR44208W





Optional  
for all **cargraphic**  
sport backboxes:

**Heat shield/rockguard**  
with lasercut „cargraphic“ script.  
Part.-No.: PXRRLMHS

**Electronic lowering module**  
lowers car by 40/30mm  
adjustable +/- 20mm  
Cockpit override switch allows user to toggle  
between stock and modified settings  
Part.-No.: MOTFALM



www.

**cargraphic**®  
.com



## NEW WHEELDESIGN INTRA I-10

available in



20" with stainless steel step rim



21" with stainless steel flat rim



22" with stainless steel step rim



Surcharge paint center black  
Part.-No.: CAR5130BLACK



Surcharge center SLC-chrome  
Part.-No.: CAR5130SLCCHROM



Surcharge center polished  
Part.-No.: CAR5130POLISH



Center lock dummy  
Part.-No.:  
CAR41910050

**cargraphic** wheels are the absolute finest 3 piece wheels on the market. This 3 piece high quality product "Made in Germany" incorporates the strongest, lightest and most durable components such as: • Heat treated cast stars or, • Spun forged machined stars, • Handpolished stainless steel outer rims, • Reinforced inner rims, • Internal bead retainer for secure and perfect tire fit as prescribed by TÜV standards, • Stainless steel bolts. Race proven on the worlds most challenging race tracks the **cargraphic** RACING wheel is the world record holder on the Nürburgring Nordschleife. All wheels are TÜV approved with extreme high wheel loads, thereby insuring the highest quality and construction. The wheels are available in the following finishes: standard: silver center; custom: black center, SLC-chrome center, painted in any colour. A **cargraphic** stainless steel centercap is included or optional for a high tech finishing touch opt for a set of **cargraphic** center lock dummies.